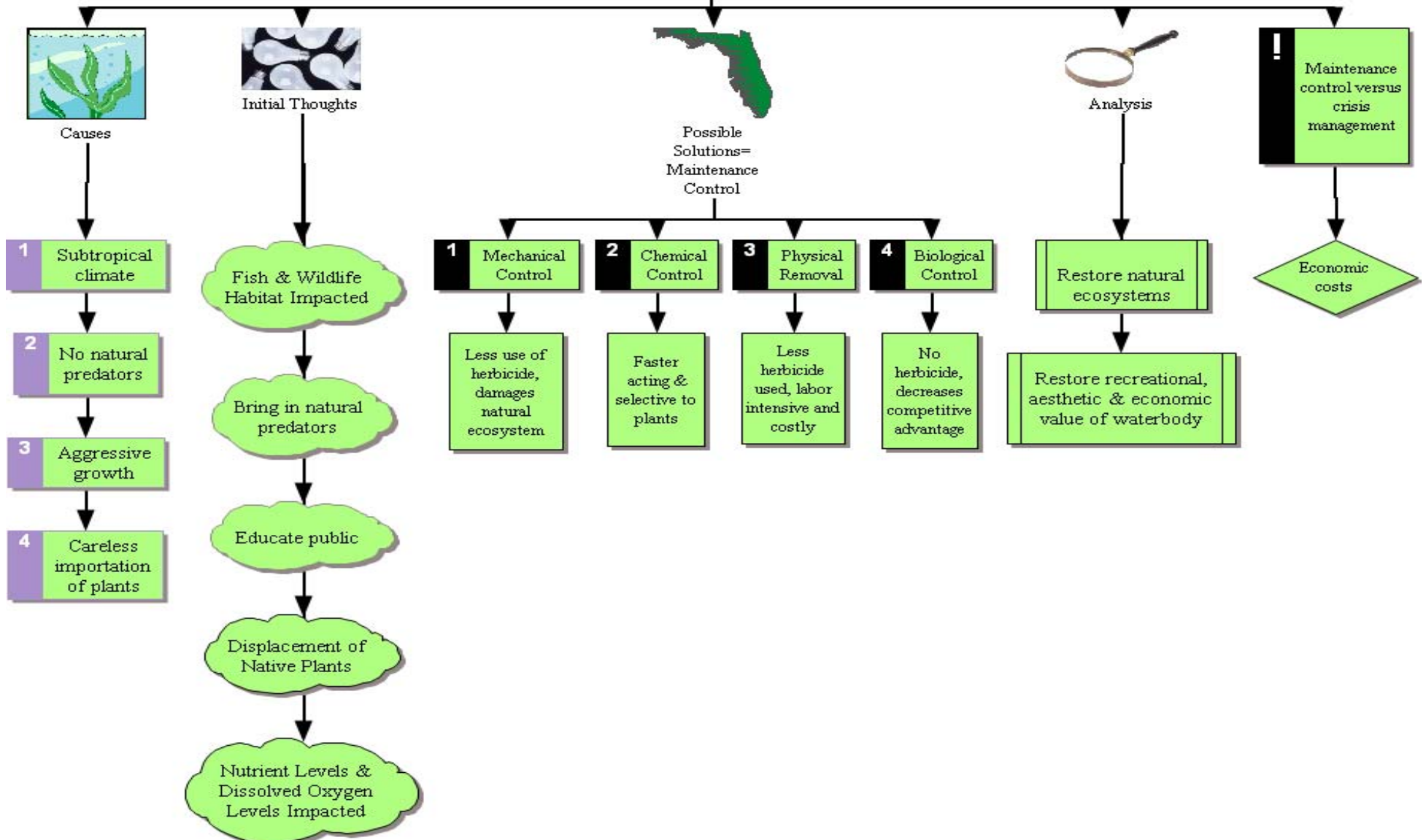


# 'Why Manage Invasive Plants?' Concept Map

DRAFT



## Why Manage Plants



# 'Why Manage Invasive Plants?' Concept Map

DRAFT



## Why Manage Plants

### 1. Causes

- Subtropical climate.
- No natural predators
- Aggressive growth
- Careless importation of plants

### 2. Initial Thoughts

- Fish & Wildlife Habitat Impacted
- Bring in natural predators
- Educate public
- Nutrient Levels & Dissolved Oxygen Levels Impacted
- Displacement of Native Plants

### 3. Possible Solutions= Maintenance Control

- Mechanical Control
  - Less use of herbicide, damages natural ecosystem
- Chemical Control
  - Faster acting & selective to plants
- Physical Removal
  - Less herbicide used, labor intensive and costly
- Biological Control
  - No herbicide, decreases competitive advantage

### 4. Analysis

- Restore natural ecosystems
- Restore recreational, aesthetic & economic value of waterbody

### 5. Maintenance control versus crisis management

- Economic costs